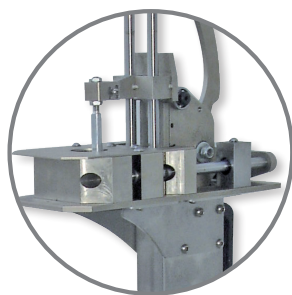




P A T E N T E D

“ZEUS” CORKER

OPERATION AND MAINTENANCE MANUAL



 **FERRARI**[®] group

Dear Customer,

Thank you for choosing FERRARI GROUP SRL.

Please read the instructions in this manual carefully. The proper use and maintenance of this corker will help to ensure that it reaches its maximum life expectancy as well as keep the warranty valid.

Please store this manual in a safe place and consult it before proceeding with any operation, format change, or cleaning task.

| | |
|---|-----------|
| Introduction | |
| Warranty | 3 |
| Usage conditions and limitations | 4 |
| Technical specifications and Kit | 5 |
| Preliminary operations | 7 |
| <i>Configuration for 8 - 12 liter bottles</i> | 8 |
| <i>Configuration for 5 liter bottles</i> | 10 |
| <i>How to restore initial configuration</i> | 10 |
| <i>How to adjust the pin for standard corks</i> | 12 |
| Operation | 13 |
| Maintenance | 14 |
| Storage and demolition | 15 |
| Overview table 1 | 16 |
| Overview table 2 | 17 |
| Exploded view drawing | 18 |

INTRODUCTION



Please read this manual carefully before using the corker.

To get the maximum performance, reliability, and durability of the corker, it is important that you follow these instructions carefully.

This manual is an integral part of the corker and must be carefully stored by the user.

This manual must accompany the corker if it is sold to a new user.

Notwithstanding the main technical and safety features of this product, in a continuing effort to improve production, the manufacturer reserves the right to make changes without notice in order to improve its products.



IMPORTANT! Follow all instructions marked with this symbol very carefully as they include information on important safety regulations.

WARRANTY

FERRARI GROUP SRL warrants the corker described in this manual for a period of **5 YEARS** starting from the date of delivery. Within this period, the manufacturer agrees to repair or replace faulty parts, provided that the corker has been properly used in compliance with the instructions included in this operation and maintenance manual.

The warranty will be voided for the following:

1. Poor maintenance and misuse of the corker
2. The use of non-original spare parts;
3. Tampering by persons not authorized by **FERRARI GROUP SRL**.

The spare parts replaced under warranty must be returned (on request)

The warranty does not cover parts of the corker that are subject to wear.

FERRARI GROUP SRL shall not be held liable for general malfunctions or failures caused by improper use or interventions and/or modifications performed by unauthorized external persons.



The Zeus corker is a manual corking machine and has been designed to cork bottles only with corks made of cork or synthetic material. The maximum dimensions of both corks and bottles are specified in the "Overview table 1" on page 16.

FERRARI GROUP s.r.l. shall not be held liable for injuries to persons/animals, or damages to property or the corker arising from improper use.



DO NOT REMOVE TEMPORARY GUARDS ON MOVING PARTS

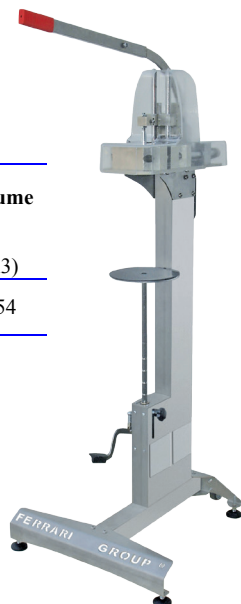
This symbol indicates that it is forbidden to remove safety guards and devices except if set-up adjustments are necessary.



SAFETY GLOVES MUST BE WORN This symbol indicates that safety gloves must be worn when corking or during any other maintenance or handling operation.

The overview table below provides an overview of the technical data specifications for the “Zeus” corker.

| Weight | Material | Length | Width | Height | Volume |
|--------|-------------------------------------|--------|-------|--------|--------|
| (kg) | | (mm) | (mm) | (mm) | (m3) |
| 43 | -Stainless Steel -Hardened Steel | 550 | 700 | 1400 | 0,54 |



The corker is furnished with the following equipment:

N.3 numbered bottle mouth adaptors;

N.1 cork pushing pin ø 15 mm, h 55 mm;

N.1 cork pushing pin ø15 mm, h 40 mm for mushroom corks;

N.1 kit for large bottles (see picture on the right) consisting of:

N.2 5 mm spacers (A photo)

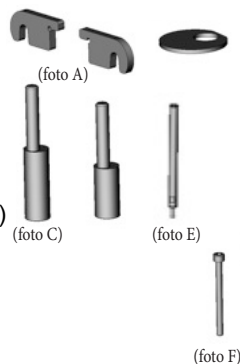
N.1 centering plate (B photo)

N.1 eccentric cork pushing pin, ø19 mm h 55mm (C photo)

N.1 eccentric cork pushing pin, ø 19 mm, h 40 mm,
for mushroom corks (D photo)

N.1 extension rod for bottle height adjustments (E photo)

N.1 Prism lock pin (F photo)

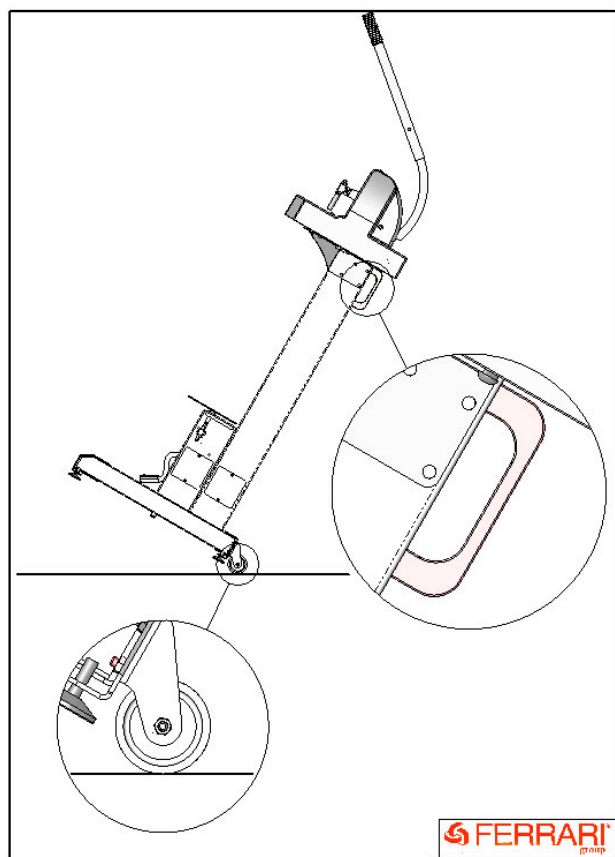


The “overview table 1” includes bottle and cork measurements for the correct use of the parts included with the corker.

The “preliminary operations” section covers the procedures for assembling the parts listed above.

The base of the “Zeus” corkscrew consists of 4 adjustable feet with non-slip rubber which are also suitable for uneven floors.

The machine can be transported manually as has 2 wheels and a handle for pulling it. Watch out for bumps, holes, objects, and material when moving the machine to prevent it from tipping over.



PRELIMINARY OPERATIONS

When you receive the corker, check that the machine and its accessories match the list on page 5. Make sure that the product has not been damaged during transport.

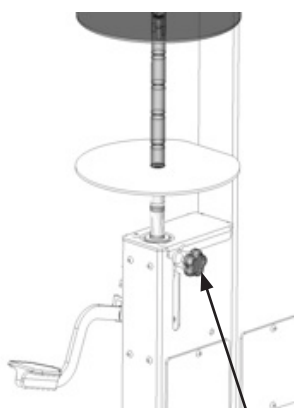


The machine is delivered ready to cork 3 liter bottles with 55 mm long and $\varnothing 15$ mm plunger and the n.2 bottle mouth adaptor (for cork measurement see “overview table 1”).

If specifically requested, the corker can also be calibrated for a different sized bottle.

For all other types of bottles follow the operations listed below.

To adjust the height of the platform simply screw or unscrew the black adjustment knob located on the lower front right hand side. If necessary, mount the extension rod provided with the machine (see “overview table 2”).



Adjustment knob

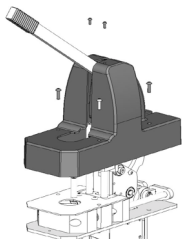


Extension rod for platform extender

Configuration for 8 -12 liter bottles

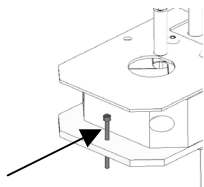
Follow the instructions below to assemble the kit for large bottles:

1) Remove the end part of the corking lever.

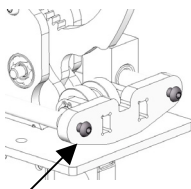


2) Unscrew the 6 setscrews of the clear safety guard

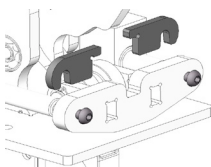
3) Now remove the safety guard



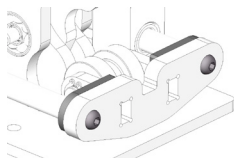
4) Insert the prism lock pin.



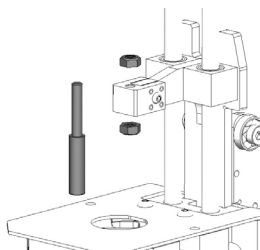
5) Loosen the 2 screws (see picture)



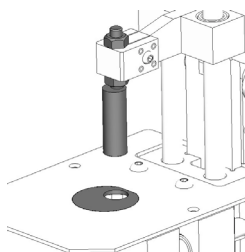
6) Insert the 2 5mm spacers included in the kit for large bottles



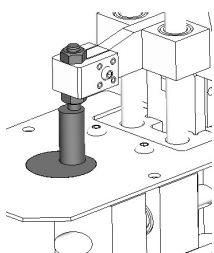
7) Replace the screws and firmly tighten them



8) Unscrew the 2 nuts and remove the 15 mm diameter plunger (see picture)



9) Insert and screw in the 19 mm diameter plunger (for champagne corks use the 40 mm long pin, otherwise select the 55 mm long plunger) with the centering template included in the kit for big bottles (see picture)



10) Once adjustments are complete, tighten the 2 nuts

11) Check that the plunger is centered on the centering hole when it goes down. Position the cork in the bottle by screwing or unscrewing the plunger (see picture)

12) Remove the centering template

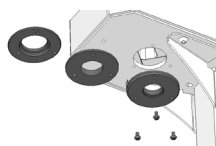
13) Remove the prism lock pin.

14) Put the safety guard back on



CAUTION The 19 mm eccentric plunger must always be mounted with the kit, in order not to damage the 4 prisms

Configuration for 5 liter bottles

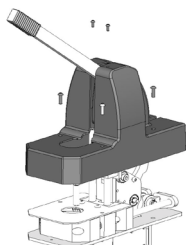


Follow the same procedure explained in the previous paragraph. In addition, mount adaptor n. 3 on the machine (as indicated in table n.1)

How to restore the initial configuration (0.75 – 1.5 – 3 liter bottles)

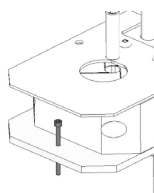
Follow the procedure below to restore the machine to the standard version:

1) Remove the end part of the corking lever.



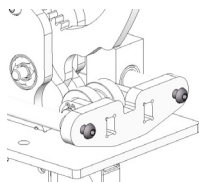
2) Unscrew the 6 setscrews of the safety guard (see picture)

3) Now remove the safety guard

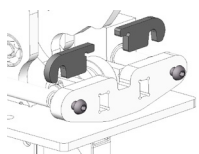


4) Insert the prism lock pin as shown in the picture

PRELIMINARY OPERATIONS

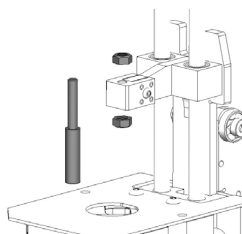


5) Loosen the 2 screws shown in the picture



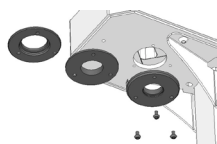
6) Remove the 2 5mm spacers shown in the picture

7) Put the 2 screws back in



8) Unscrew the 2 nuts and remove the 19 mm diameter plunger

9) Screw the 15 mm diameter pin back in (for champagne head corks use the 40mm long pin, otherwise select the 55mm long pin) with the 2 lock nuts, adjusting the height desired for the cork.



10) Mount adaptor n.1 or n.2 depending on the mouth of the bottle that you would like to cork (see overview table n.1)

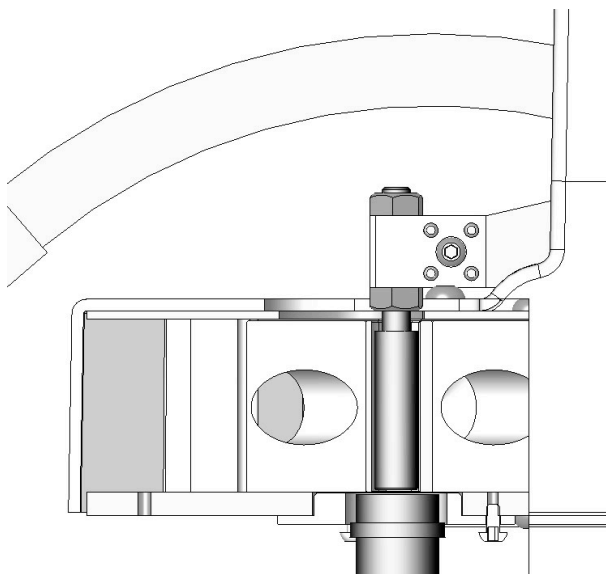


IMPORTANT: The 3 adaptors are suitable for most mouth sizes of off-the-shelf bottles. However, check that the adaptor is the appropriate size before proceeding to corking operations (if it is not compatible, please contact the technical office of FERRARI GROUP SRL and they will be able to produce a part to meet your requirements)

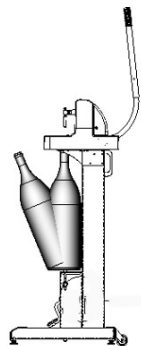
The 15 mm diameter plunger does not require the centering template

How to adjust the pin for standard corks

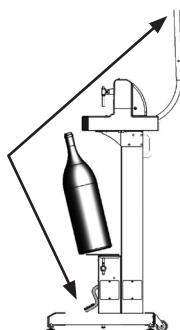
For successful bottle corking, i.e. so that the cork is flush with the bottle, you must adjust the 55 mm long pin (\varnothing 19 or \varnothing 15 as required) so that when the lever is in the horizontal corking position, the pin is flush with the lower end of the prisms (see the illustration below).



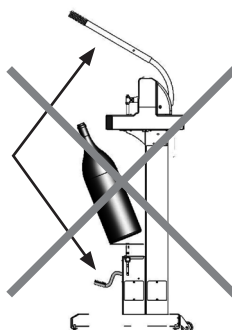
1. Position the corking lever in a vertical position
2. Press the pedal with your foot to lift and lower the platform
3. Place the bottle on the platform
4. Release the pedal carefully until the upper mouth of the bottle reaches the mouth adaptor of the machine (see picture)
5. Put a cork in the opening at the top
6. Pull down on the corking lever and cork the bottle
7. Make sure that the cork is completely inserted in the bottle and complete the cycle
8. Bring the corking lever back to the initial position
9. Press the up-down pedal with your foot
10. Remove the bottle
11. Release the pedal



CAUTION: Press the up-down pedal only when the lever is in the vertical position; failure to do so may cause permanent damage to the locking clutch.



YES



NO

- To keep the machine in perfect working condition it is very important that you clean off any dust on the cork,
- Use a brush or compressed air to remove any cork residue that may accumulate in the moving seat of the prisms,
- Keep the work area clean and free of any material that could obstruct corking operations,
- Keep the surrounding area clean; in particular, make sure that the area is free from oil and grease or other materials that could make the floor slippery,
- Use lithium grease to lubricate the gear shafts,
- Use grease or neutral food grade Teflon solids or spray to lubricate internal head movements (prisms, gibs) coming into contact with corks.

Check that:

- All safety guards have been properly mounted and closed.

Once a year:

- Check that all screws and bolts are properly tightened on the machine.

If the machine is kept in storage for an extended period of time, store it in an area protected from rain and wind and, if possible, in a dry area.

Do not expose the machine to temperatures that are less than -10°C or greater than + 60°C.



It is forbidden to leave the machine or parts of the machine on structures that have not been especially designed for it.

Do not leave material or tools on the machine.

Machine Disposal

Any waste resulting from dismantling the machine must be disposed of in an eco-friendly manner, thus avoiding ground, air, and water pollution.

In any case, you must comply with all local laws in force on waste disposal.

We would like to remind you that waste is defined as any type of substance or object which the holder disposes of or is required to dispose of (Legislative Decree n.22 of 5 February 1997 and Legislative Decree n. 389 of 8 November 1997).

Waste resulting from the dismantling of the machine is classified as special waste.

Demolition Materials

These are non-hazardous special waste that can be recovered, in accordance Ministerial Decree 5 February 1998

- Ferrous materials, aluminum, stainless steel, copper;
- Plastic materials;
- Electronic cards;
- Electric conductors.

Information on proper waste management

Ferrous materials: As this type of material can be recycled (secondary raw materials) it should be delivered to the appropriate authorized collection center.

Plastic materials: Recycling is permitted, if provided.

This type of material should be disposed of in urban waste type landfills.

Incineration is permitted in facilities equipped with post combustion and dust control systems before release into the environment

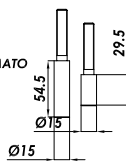
OVERVIEW TABLE 1

ADATTATORI CERCINE

RING ADAPTOR

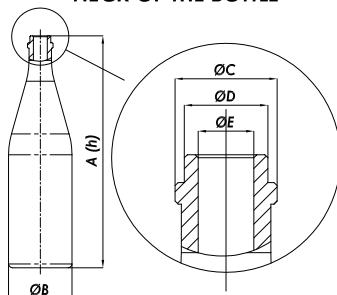
KIT x BOTTIGLIE PICCOLO FORMATO

KIT FOR SMALL SIZE BOTTLES



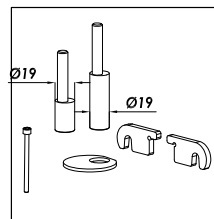
CERCINE (COLLO BOTTIGLIA)

NECK OF THE BOTTLE

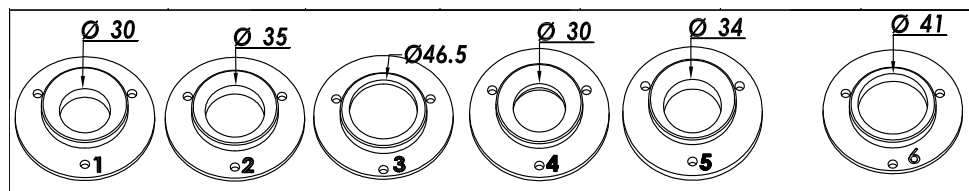


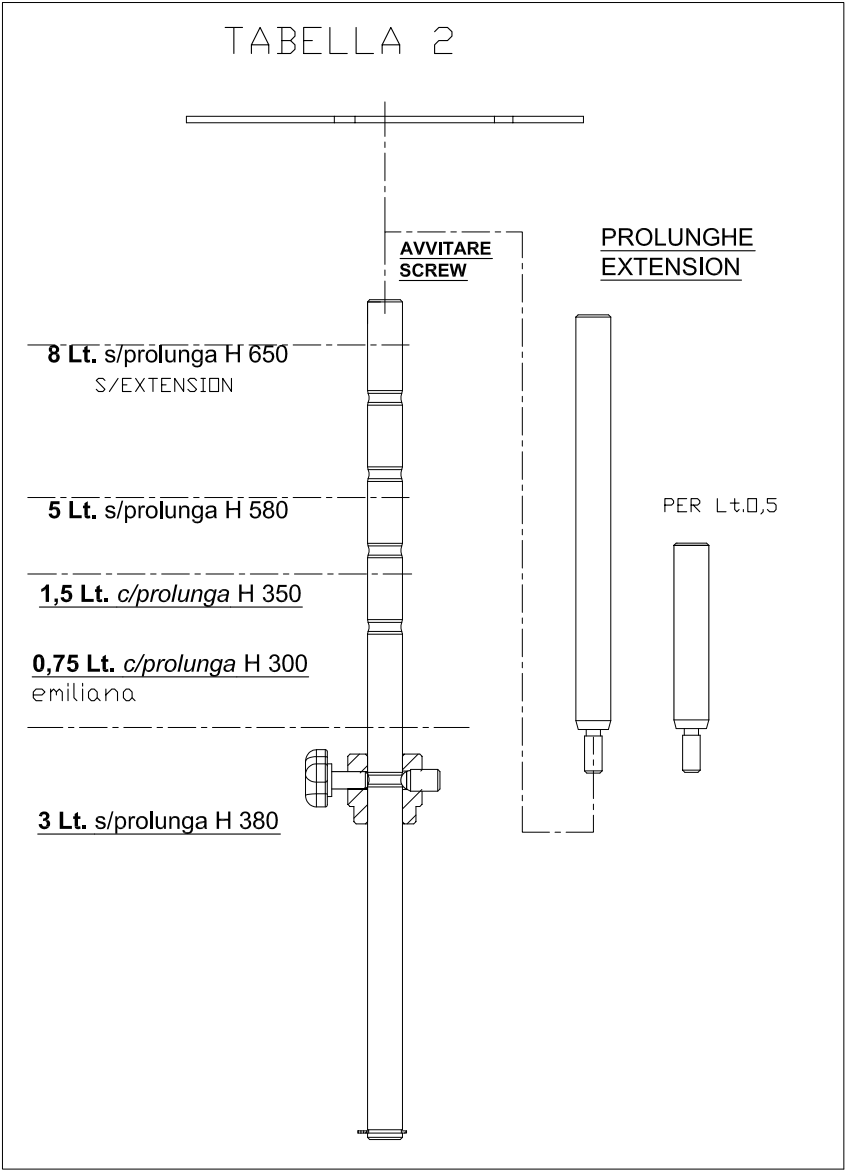
KIT PER BOTTIGLIE GRANDE FORMATO

BIG SIZE BOTTLE KIT

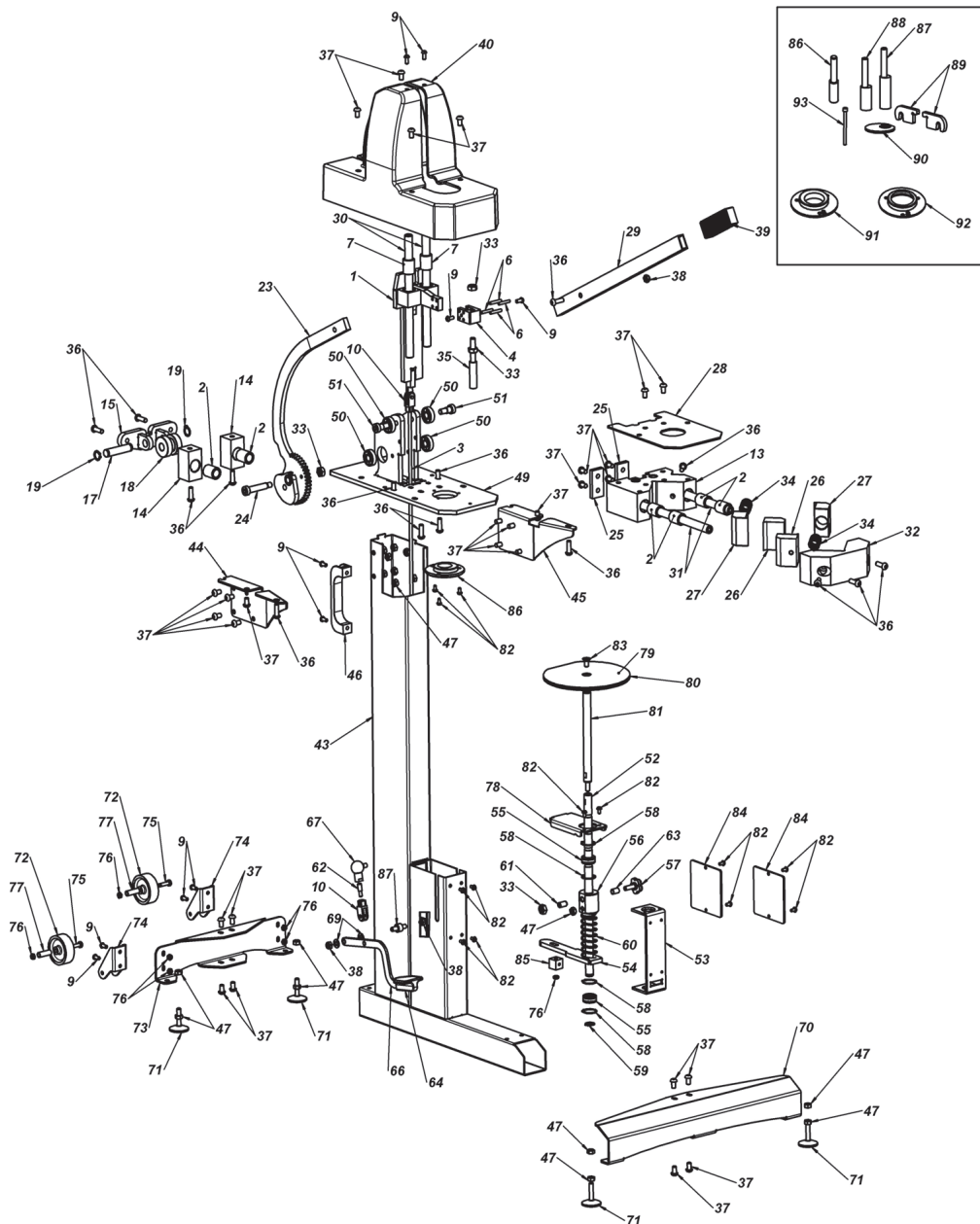


| NB: DIMENSIONI ESPRSE IN MILLIMETRI | BORDOLESE - EMILIANA LT.0.75 A RASO | JEROBOAM LT.3 SFUMANTE E A RASO | MATTHUSALEM LT6 | BORDOLESE DOPPIA LT.1.5 | BORDOLESE LT.3 | BORDOLESE LT.5 | SPUMANTE LT.0.75 A FUNGO | LT. 12 A RASO | LT.12 A FUNGO | MAGNUM LT.1.5 0.75 0.50 A FUNGO | LEGEND a raso: cork for still wine a fungo: cork for sparkling wine |
|---|-------------------------------------|---------------------------------|-----------------|-------------------------|----------------|----------------|--------------------------|---------------|---------------|---------------------------------|---|
| A (h) | 300 | 485 | 580 | 410 | 460 | 530 | 300 | 650 | 580 | 380 | |
| B Ø | 82 | 130 | 175 | 95 | 120 | 140 | 82 | 200 | 175 | 110 | |
| C Ø | 33 | 41.5 | 46 | 33.5 | 46 | 46 | 33 | 51 | 46 | 33 | |
| D Ø | 29 | 34 | 38/40 | 30.5 | 40 | 40 | 29 | 41 | 38/40 | 29 | |
| F Ø | 17.5 | 18.5 | 20.5 | 18 | 22 | 25 | 17.5 | 21 | 20.5 | 18 | |
| ADATTATORE CERCINE | 1 | 2 | 3 | 4 | 3 | 3 | 5 | NO | 6 | 5 | RING ADAPTOR |
| INCHIOSTRO TAPPO MAX | 30x40 30x50 (PUNGO) | 30x40 30x50 (PUNGO) | 32X 45 | 30X 40 | 30X 40 | 30X 40 | 30x40 30x50 (PUNGO) | 40x60 | 32X45 | 30x40 30x50 (PUNGO) | MAX CORK SIZE |
| Ø PERNO SPIN TAPPO | 15 | 15 | 19 | 15 | 19 | 19 | 15 | 19 | 19 | 19 | DIAM. PLUNGER |
| KIT BOTT. GRANDE FORMATO D. MAX 40 MIN. 20 | NO | NO | SI | NO | SI | SI | NO | SI | SI | NO | KIT FOR BIG SIZE BOTTLE max diam.40;min.diam 20 |





EXPLODED VIEW DRAWING



EXPLODED VIEW DRAWING

| number | description | quantity |
|--------|--|----------|
| 1 | SE6.550.00- RACK+ GUIDE PLATE FOR « ZEUS » CORKER | 1 |
| 2 | VI.6033- SLIDING CUP D24X30X 30 LIGHT SERIES | 6 |
| 3 | VI.6044- THREADED BAR M6 LENGTH 840MM. | 1 |
| 4 | SE6.510.34- ADJUSTABLE PLUNGER HOLDER SNUG M.10 | 1 |
| 6 | VI.0007- CYLINDRICAL PIN D 5X30 | 4 |
| 7 | VI.6041- NEEDLE SLIDING CUP D.16X24X30 | 2 |
| 9 | VI.6106- SCREW TBCE M 6X14 | 10 |
| 10 | VI.6054- FORK M6 WITH PIN | 2 |
| 13 | SE6.510.01- JAWS HOLDER FIXED GIB | 1 |
| 14 | SE6.510.29- COLUMN SUPPORT D.16 | 2 |
| 15 | SE6.550.30- BRACKET TO FIX THE GUIDES | 1 |
| 17 | SE6.510.32- PIN FOR CRIMPING CUP FOR COMPENSATOR SLIDE | 1 |
| 18 | SE6.510.36- CRIMPING CUP FOR COMPENSATOR SLIDE | 1 |
| 19 | VI.6117- SEEGER D 15 EST | 2 |
| 23 | SE6.550.40 - LEVER WITH RACK GEAR+BUSH+ COMPENSATOR | 1 |
| 24 | VI.6126- COLLAR SCREW D.12 L- 50M.10 | 1 |
| 25 | SE6.500.08- RACK GUIDE PLATE | 2 |
| 26 | SE6.510.26- FIXED JAW H 60 | 2 |
| 27 | SE6.510.25- MOBILE JAW H 60 | 2 |
| 28 | SE6.500.05- JAWS COVER | 1 |
| 29 | SE6.500.13- LIVER MOBILE HANDLE | 1 |
| 30 | SE6.510.28- GUIDE COLUMN FOR PLUNGER D.16 | 2 |
| 31 | SE6.510.22- GUIDE CUP FOR GIB D 16 | 2 |
| 32 | SE6.510.02- MOBILE GIB JAWS HOLDER H.60 | 1 |
| 33 | VI.6073- STAINLESS STEEL SCREW NUT M 10 | 4 |
| 34 | SE6.003.04- SPRING FOR JAWS | 2 |
| 35 | SE6.510.31- STAINLESS STEEL PLUNGER PIN M 10 | 1 |
| 36 | VI.6093- STAINLESS STEEL SCREW TBCE M 8X25 | 15 |
| 37 | VI.6107- STAINLESS STEEL SCREW TBCE M8X14 | 26 |
| 38 | VI.6078- SELFLOCKING SCREW NUT M8 | 3 |
| 39 | ST1.215.99- HANDLE FOR FLOOR CORKERS | 1 |
| 40 | ST6.706.00- CORKER HEAD FRAME | 1 |
| 43 | SE6.550.10- CORKER FRAME | 1 |
| 44 | SE6.510.06- COLLAR HEAD SUPPORT SX | 1 |
| 45 | SE6.510.05- COLLAR HEAD SUPPORT DX | 1 |
| 46 | SE6.210.20- HANDLE | 1 |
| 47 | VI.6112- STAINLESS STEEL SCREW NUT M8 | 17 |
| 49 | SE6.550.20- GIBS SUPPORT PLATE + LEVER SUPPORTS | 1 |
| 50 | VI.6125- BEARING D.12X32X10 2RSH | 4 |
| 51 | VI.6127- COLLAR SCREW D 12 L15 M10 | 2 |
| 52 | SE6.510.17- PIN FOR MANUAL UP AND DOWN MOVABLE PLATE | 1 |

| number | description | quantity |
|--------|---|----------|
| 53 | SE6.510.07- LATCH SUPPORT | 1 |
| 54 | SE6.510.09- FRICTION PLATE | 1 |
| 55 | SE6.008.99- COPPER COMPASS LATCH GUIDE D.16-28 | 2 |
| 56 | SE6.510.23- LATCH REGISTER | 1 |
| 57 | VI.9002- HANDWHEEL | 1 |
| 58 | VI.6114- SEEGER D.28 OUTSIDE | 4 |
| 59 | VI.6104- SEEGER D.26 OUTSIDE | 1 |
| 60 | SE6.005.05- INSIDE SPRING FOR OMEGA LATCH | 1 |
| 61 | VI.0109- GRAIN M8 WITH SPHERE | 1 |
| 62 | SE6.510.41- SMALLER PIVOT LATCH M8-M6 | 1 |
| 63 | SE6.510.18- INOX TUBE FOR LATCH KNOB | 1 |
| 64 | ST5.486.01- PLASTIC PEDAL | 1 |
| 65 | SE6.510.37- OUTDISTANCE FOR INOX LATCH LEVER | 1 |
| 66 | SE5.500.15- INOX SHAPED LEVER | 1 |
| 67 | VI.6128- PISTON JOINT | 1 |
| 69 | VI.6113- INOX WASHER D.8 X 15 | 2 |
| 70 | SE6.510.14- ANTERIOR FOOT | 1 |
| 71 | VI.6092- UNTIED FOOT | 4 |
| 72 | VI.6000- WHEEL M860 HOLE D10 | 2 |
| 73 | SE6.510.15- BACK FOOT MANUAL CORKER | 1 |
| 74 | SE6.510.40- WHEEL SUPPORT | 2 |
| 75 | VI.0344- SCREW TCSE | 2 |
| 76 | VI.0044- INOX NUT M6 | 7 |
| 77 | VI.6001- WHEEL IRON TUBE | 2 |
| 78 | SE6.510.08- LATCH COVER | 1 |
| 79 | SE6.510.27- NON SLIP RUBBER | 1 |
| 80 | SE6.510.16- MAGNUM LATCH PLATE | 1 |
| 81 | SE6.510.33- PROTRACT COLUMN LATCH | 1 |
| 82 | VI.6059- INOX TBCE SCREW M5 | 13 |
| 83 | VI.6099- BLACK TSEY SCREW M8X10 | 1 |
| 84 | SE6.510.24- INSPECTION LID | 2 |
| 85 | SE6.003.07- CLAMP FRICTION REGISTER | 1 |
| 86 | SE6.510.38- INOX PUSHING CORK PIVOT | 1 |
| 87 | SE6.510.19- ECCENTRIC PIVOT PUSHING CORK | 1 |
| 88 | SE6.510.39- ECCENTRIC PIVOT PUSHING CORK FOR MUSHROOM | 1 |
| 89 | SE6.500.10- CLOSING REGULATOR | 2 |
| 90 | SE6.510.12- CENTERING MASK ECCENTRIC CORK | 1 |
| 91 | SE6.510.20- 3LT BOTTLES ADAPTER | 1 |
| 92 | SE6.510.35- MATUSALEM BOTTLES ADAPTER | 1 |
| 93 | VI.6068- ZINC TCEI SCREW M4X40 | 1 |



Via Europa, 11 - 43022 Basilicogioiano - Parma (Italy)
Tel. + 39.0521.687125 - Fax +39.0521.687101
E-mail: info@ferrarigroup.com Web: www.ferrarigroup.com

