



WIRE-HOODING MACHINE "FAST PROFESSIONAL"



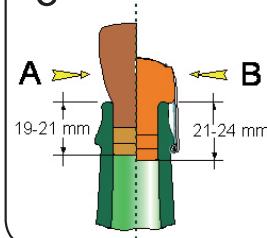
UNIQUE

Fastener for wire retainer that properly place the natural corks for tightening the wire retainers under the ring of the bottle neck. For sparkling wine/champagne lt. to 0.375 lt. 9.

ACCURATE

A proper capping places the cork in the bottle for about 19/21 mm (photo A). The following compression with the Fast Professional Fastener allows to place the natural cork in the correct position after corking 21/24 mm (photo B) and however no more than 2/3 mm. under the ring of the bottle neck. The elastic deformation of the compressed cork provides a perfect sealing which is essential before tightening the wire retainer under the ring of the bottle head.

figura A-B



STRONG

- Made of stainless steel.
- It includes a pressing full zinc cup for standard wire retainers of mm. 35 (other sizes of cups are available upon request).
- It includes n°3 rotating pivots.
- DIMENSIONS: W.cm.30 H.cm.95 D.cm.34 Weight Kg.12

Art. 17165

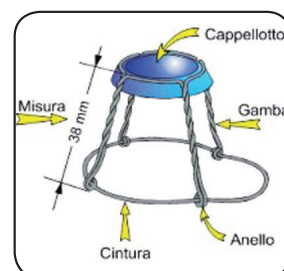
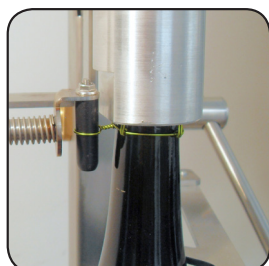
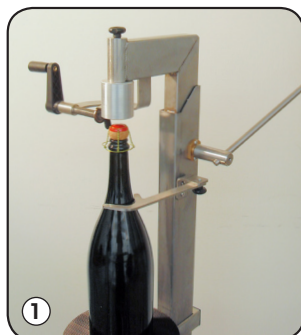


TABLE MATCHING BOTTLES - NATURAL CORKS - WIRE RETAINERS

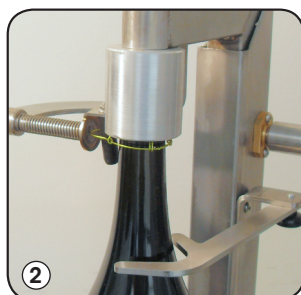
Name of the Bottle	Unit of measure	Bottle content	Recommended cork(mm)	Recommended wire retainer
Demie	1/2	Cl. 37,50	30,5 x 48	Standard
Bouteil	1/1	Cl. 75,0	30,5 x 48	Standard
Magnum	2/1	Lt. 1,50	30,5 x 48	Standard
Jeroboam	4/1	Lt. 3,00	32,5 x 54	Big wire retainer (H42-H44)
Rehoboam	6/1	Lt. 4,50	32,5 x 54	Big wire retainer (H42-H44)
Mathusalem	8/1	Lt. 6,00	32,5 x 54	Big wire retainer (H42-H44)
Salmanazar	12/1	Lt. 9,00	34,0 x 54	Mat.e sbn wire retainer



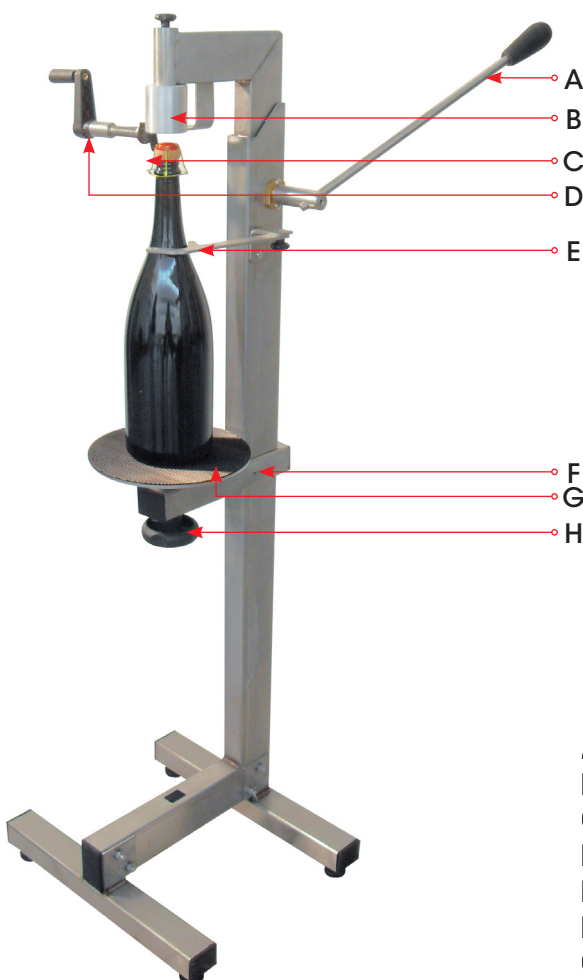
Adjusting the bottle on the "Fast" Wire-hooding machine



1- After you have correctly corked the bottle, put the wire hood on the cork and place the bottle on the plate so that the cork + wire hood are 1 cm from the deforming bush.

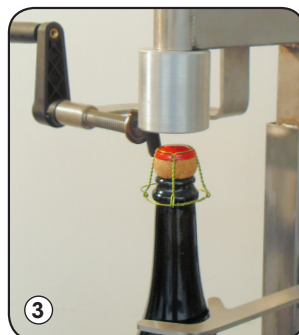


2- Press the lever up to "end of stroke", compressing the cork + wire hood so that the rings of the legs of the wire hood are positioned at 1/2 mm below the lip of the bottle. To perfectly reach this location, use the adjustment screw located under the plate. (it is absolutely necessary to repeat the plate adjustment operation at each change of the type of wire hoods or bottles).



- A:** Compression lever
- B:** Deforming bush
- C:** Twisting hook
- D:** Twisting device handle
- E:** Bottle centring beam
- F:** Height adjustment locking screw
- G:** Adjustable bottle-holding plate
- H:** Plate stopping lock

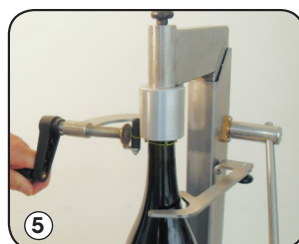
Wire-hooding the bottle



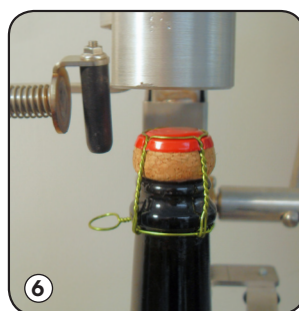
3- Position the corked bottle on the plate with the eye of the wire hood towards the twisting hook, that must be facing downwards.



4- Operate the compression lever downwards until "end of stroke".



5- Pull the belt of the wire hood with the twisting device. Turn the handwheel clockwise three times so that the wire hood will remain safely docked permanently under the lip of the bottle. Return the compression lever to its initial position and remove the bottle.



6- During the wire hooding operation, the cork will sink further, increasing the height of this parameter from the initial 19-21 mm, after the corking, of further 3 mm, reaching 21-24 mm (as required for a perfect corking).

